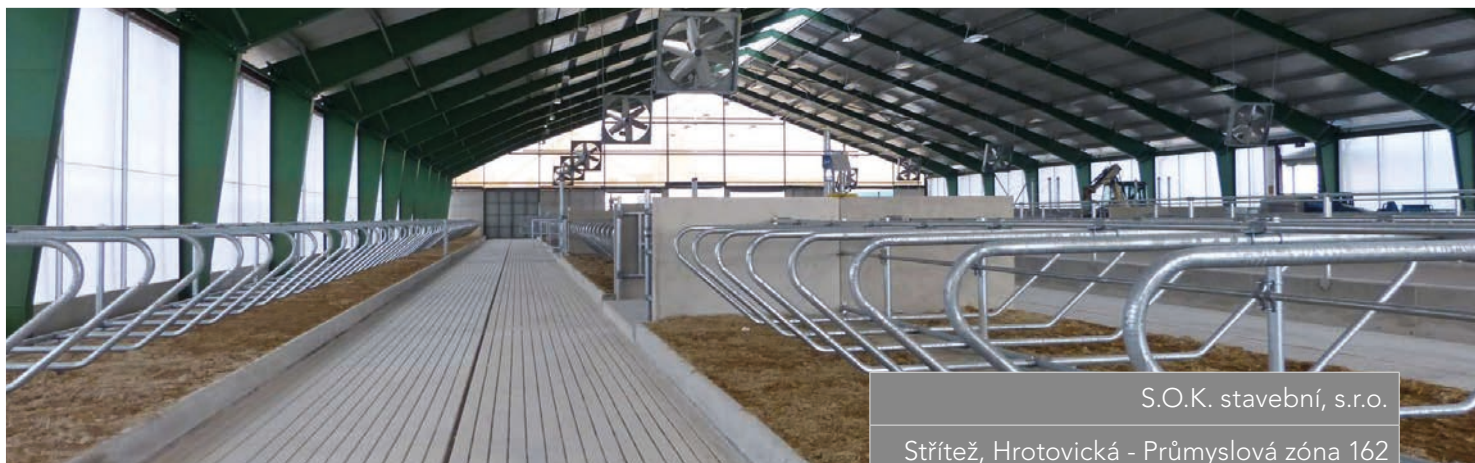




SOK[®] ...building service
stavební

AGRICULTURAL BUILDINGS CATALOGUE



S.O.K. stavební, s.r.o.

Střítež, Hrotovická - Průmyslová zóna 162

674 01 Třebíč 1

Česká republika

tel.: +420 568 838 811

e-mail: sok@sok.cz

www.sok.cz



Company's headquarters and production halls

We are a successful construction company operating in the Czech Republic and Slovakia since 1991

COMPANY PROFILE

- **In 1991** – Company Ing. Josef Netík - S.O.K. was founded.
- **In 1994** – Production and installation of steel structures was started.
- **In 1995** – Production and reconstruction of agricultural buildings was started.
- **In 1996** – Construction of residential buildings and civic amenities was started.
- **In 1998** – Company was transformed into S.O.K. stavební, s.r.o.
- **In 1999** – Project management services were started in addition to construction activities.
- **In 2001** – Construction work started in Slovakia.
- **In 2005** – Company S.O.K. real, a.s. was founded.
- **In 2007** – Construction of circular tanks was started.
- **In 2013** – Company employs 200 employees.
- **In 2014** – Manufacturing of modular prefabricated livestock housing for cattle, pigs and poultry was started.
- **In 2016** – Manufacturing of prefabricated family houses was started

**We are certified with:
ISO 9001:2008, ISO 14001:2004, OHSAS 18001:2007 and a certification of the
production of reinforced concrete prefabricated elements.**

FOCUS OF OUR ACTIVITIES

- complete buildings for agriculture
- steel structures
- manufacture of precast
- industrial buildings
- construction of prefabricated residential houses

- related services: building design
 project management

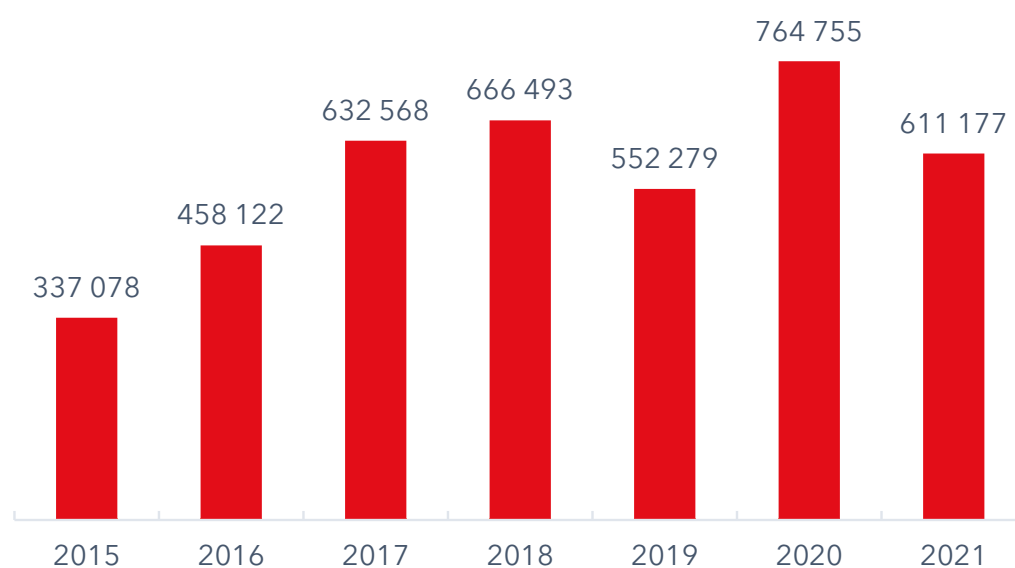
GUARANTEE

- compliance with deadlines and the agreed prices
- recommendation of the most efficient materials and structures
- implementation of experience from similar buildings

WE OPERATE IN THE CZECH AND SLOVAK REPUBLIC

- overview of our buildings can be found at www.sok.cz

CASH FLOW (in mill. Kč)



BUSINESS TEAM S.O.K.

• MAREK BRABENEC
business director

Tel.: (+420) 568 838 828
e-mail: brabenec@sok.cz

• JIŘÍ PASEKA
sales manager

Tel.: (+420) 702 200 046
e-mail: paseka@sok.cz

• KAREL BULIČKA
regional sales manager

Tel.: (+420) 602 765 245
e-mail: bulicka@sok.cz

• ING. MIROSLAV SOCHOR
regional sales manager

Tel.: (+420) 725 172 402
e-mail: sochor@sok.cz



REALIZED CONSTRUCTIONS



CATTLE



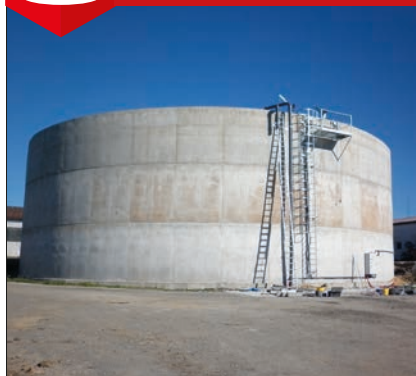
PIGS



POULTRY



SUMPS



SILAGE TROUGHS



DUNGHILLS



STEEL STRUCTURES



**PRECAST
PRODUCTION**



**OTHER
CONSTRUCTIONS**





CATTLE

TAURUS, družstvo, Protivanov, rearing young cattle

Place of realization:	Protivanov
Dimensions:	91 x 34 m
Realization date:	2010 / 2011



ZOD 11 KVĚTEN a.s., Milín, reconstruction of the calf house

Place of realization:	Cetyně
Dimensions:	60 x 15 m
Realization date:	2012



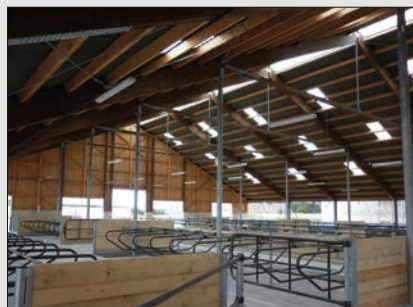
Poľnohospodárske družstvo Horné Dubové - Naháč, roofing for open stables

Place of realization:	Horné Dubové
Dimensions:	72 x 14 m
Realization date:	2012



AGRO SVATBÍN s.r.o., completion of dairy farm

Place of realization:	Svatbín
Dimensions:	68 x 34 m 55 x 11 m
Capacity:	248 pcs
Realization date:	2012 / 2013



ZD „Růžový palouček“, Morašice - barn, milking parlor, barn for calves

Place of realization:	Újezdec
Dimensions:	115 x 37 m 12 x 53 m 58 x 9 m 53 x 28 m
Capacity:	453 pcs 24 + 120 pcs 91 pcs 130 pcs
Realization date:	2013



AGRONEA a.s. Polička, farm for milk cows

Place of realization:	Pomezí
Dimensions:	72 x 34 m
Capacity:	283 pcs
Realization date:	2014



Hvozdecká zemědělská a.s., newly built stables for calves

Place of realization:	Hvozd
Dimensions:	30 x 18 m 24 x 13 m
Capacity:	234 calves 49 heifers
Realization date:	2014



CIZ - AGRO, a.s. Cizkrajov, shelter for calves

Place of realization:	Cizkrajov
Dimensions:	41 x 14 m
Capacity:	90 calves
Realization date:	2014 / 2015



VOS zemědělců, a.s., modernization of dairy farm - milking parlor

Place of realization:	Uhřice
Capacity:	2 x 14 pcs
Realization date:	2015



Zemědělské družstvo Dobruška, modernization of stables

Place of realization:	Dobruška
Dimensions:	85 x 53 m
Capacity:	444 pcs
Realization date:	2015



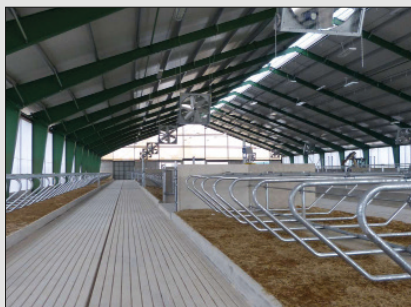
AGROSPOL Výprachtice s.r.o., modernization of farm

Place of realization:	Výprachtice
Dimensions:	35 x 70 m
Capacity:	266 pcs
Realization date:	2016



BONAGRO, a.s., modernization of dairy farm

Place of realization:	Šlapanice
Dimensions:	2 x 88 x 36 52 x 32 79 x 32
Capacity:	2 x 327 ks 2 x 18 ks 110 ks 42 ks
Realization date:	2016



František Novák, modernization of farm

Place of realization: Puchýrna

Capacity: 44 pcs

Realization date: 2016 / 2017



NIROS, spol. s r. o., a stable with dying robot

Place of realization: Nížkov

Dimensions: 53 x 30,5 m

Capacity: 155 pcs

Realization date: 2016 / 2017



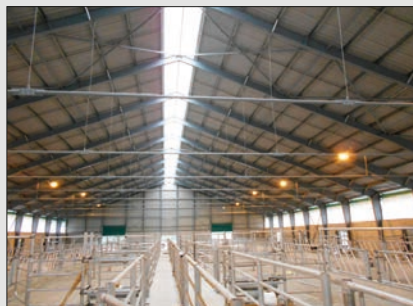
AGRO SLATINY a. s., a stable for bulls

Place of realization: Slatiny

Dimensions: 31 x 59 m

Capacity: 336 pcs

Realization date: 2016 / 2017



Roľnícké družstvo Bzovík, modern bairy farm

Place of realization: Bzovík

Dimensions: 36 x 150m | 36 x 73 m |
60 x 21m | 60 x 19m

Capacity: 574 pcs | 136 pcs |
2 x 20 pcs | 1 x 8 pcs

Realization date: 2017 / 2018





PIGS

Letostav, spol. s.r.o., Letovice, stables for pigs

Place of realization:	Suchohrdly
Dimensions:	25 x 96 m
Realization date:	2007 / 2008



GRANERO Vlasatice, s.r.o., 5 newly built halls and feed mill

Place of realization:	Vlasatice
Dimensions:	halls 50 x 24 m fed mill 30 x 24 m
Capacity:	5 x 165 pcs
Realization date:	2008



AGRICO s.r.o., Třeboň, reconstruction of farrowing facility

Place of realization:	Tochovice
Dimensions:	16 x 104 m
Capacity:	1 380 pcs
Realization date:	2008 / 2009



ZD Hraničář Loděnice, reconstruction of pig feedlot and piglet rearing

Place of realization:	Loděnice
Dimensions:	výkrm 14 x 78 m odchov selat 13 x 82 m
Realization date:	2009



Horákova farma Čejč, reconstruction of pig farm

Place of realization: Čejč

Dimensions: 27 x 16 m

Capacity: 145 pcs

Realization date: 2009 / 2010



Zemědělské družstvo Hlavnice, reconstruction of pig farm

Place of realization: Hlavnice

Dimensions: 71 x 23 m

Capacity: 1 500 pcs

Realization date: 2009 / 2010



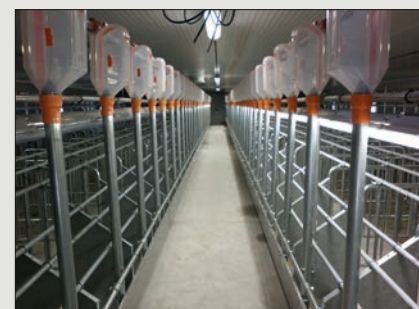
Lubská zemědělská a.s., reconstruction of farrowing facilities for sows and EROS center

Place of realization: Plánice

Dimensions: 60 x 15 m | 31 x 15 m

Capacity: 126 pcs | 160 pcs

Realization date: 2010



Zemědělské družstvo Olbramkostel, reconstruction of stables for pigs

Place of realization: Olbramkostel

Dimensions: 60 x 12 m

Capacity: 114 pcs

Realization date: 2010



HANSA C.B. spol s.r.o., České Budějovice, stables for fattening pigs

Place of realization: Staré Město

Dimensions: 138 x 30 m

Capacity: 3 640 pcs

Realization date: 2011



Porodna prasnic Seč, s.r.o., farrowing facilities for sows

Place of realization: Seč

Dimensions: 13 x 83 m

Realization date: 2012



LIPRA PORK, a.s., reconstruction of stables for breeding sows and piglets

Place of realization: Lipec

Dimensions: 2 x 195 x 30 m

Capacity: 1 938 sows | 16 boars |
350 sows | 7 680 piglets

Realization date: 2012 / 2013



HANSA C.B. spol. s.r.o., České Budějovice, farrowing facilities and feedlot

Place of realization: Staré Město

Dimensions: 30 x 76 m | 30 x 131 m

Realization date: 2013



Zemědělská společnost Zalužany a.s., reconstruction of feedlot

Place of realization: Zalužany

Dimensions: 106 x 15 m

Capacity: 1 480 pcs

Realization date: 2013 / 2014



AGRO družstvo vlastníků Puklice, farrowing facilities for sows

Place of realization: Střížov

Dimensions: 76 x 28 m

Capacity: 551 sows | 2 boars

Realization date: 2015 / 2016



GRAAKJAER A/S, reconstruction of the pig fattening farm

Place of realization: Velký Cetín

Dimensions: 11 x 8,65 x 37,46l
11 x 8,59 x 37,51

Capacity: 5 200 pcs

Realization date: 2015 / 2016



FARMA Staré Město s. r. o., modernization of the stable for rearing sows

Place of realization: Staré Město

Dimensions: 45 x 15 m

Capacity: 1 680 pcs

Realization date: 2016





Novogal a.s., Dvory nad Žitavou, hall for hens

Place of realization:	Levice
Dimensions:	24 x 105 m
Capacity:	60 000 pcs
Realization date:	2008 / 2009



SUŠÁRNA POHOŘELICE, s.r.o., grandparent generation breeding farm

Place of realization:	Trboušany
Dimensions:	95 x 84 m
Capacity:	25 200 hens 2 800 roosters
Realization date:	2009



Podnik pro výrobu vajec v Kosičkách, s.r.o., hall for hens

Place of realization:	Kosičky
Dimensions:	77 x 24 m
Capacity:	55 680 pcs
Realization date:	2010



Podnik živočišné výroby, a.s., Strakonice, reconstruction of the hall for chickens fattening

Place of realization:	Radošovice
Dimensions:	93 x 13 m
Capacity:	39 000 pcs
Realization date:	2011



Drůbežářský závod Klatovy, a.s., hall for broiler breeding nr. 7

Place of realization:	Horšov
Dimensions:	24 x 100 m
Capacity:	60 000 pcs
Realization date:	2011 / 2012



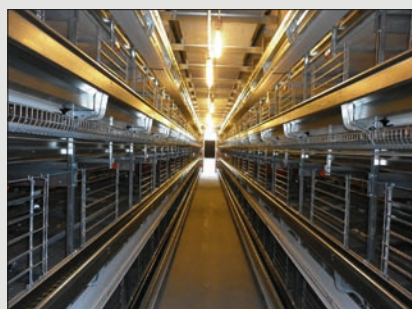
Novogal a.s., Dvory nad Žitavou, construction of the hall no. 13

Place of realization:	Dvory nad Žitavou
Dimensions:	25 x 105 m
Capacity:	83 200 pcs
Realization date:	2011 / 2012



AGPI Vajax, spol. s.r.o., Písek, hall for hens

Place of realization:	Písek
Dimensions:	74,5 x 24 m
Capacity:	78 000 pcs
Realization date:	2012



SUŠÁRNA POHOŘELICE, s.r.o., hall no. 5 for grandparent breeding material

Place of realization:	Trboušany
Dimensions:	96 x 15 m
Capacity:	6 300 hens 700 roosters
Realization date:	2012



SCHROM FARMS spol s.r.o., Velké Albrechtice, hall for hens

Place of realization:	Příbor
Dimensions:	15 x 114 m
Capacity:	11 000 pcs
Realization date:	2013



LÍHEŇ STUDENEC, s.r.o., poultry rearing in Stropěšín

Place of realization:	Stropěšín
Dimensions:	119 x 9 m
Capacity:	20 800 pcs
Realization date:	2014



BOHEMIA VITAE Jindřichův Hradec, a.s., reconstruction of hall for broiler breeding

Place of realization:	Kardašova Řečice
Dimensions:	135 x 22 m
Capacity:	50 000 pcs
Realization date:	2014 / 2015



Podnik pro výrobu vajec v Kosičkách, s.r.o., hall for hens

Place of realization:	Kosičky
Dimensions:	77 x 24 m
Capacity:	60 000 pcs
Realization date:	2016



PROAGRO Nymburk a.s., egg sorting

Place of realization: Městec Králové

Dimensions: 46,5 x 38 m

Capacity: 1 million eggs / day

Realization date: 2016



AGROSTAAR KB spol. s r. o., hall for broilers

Place of realization: Králov Brod

Dimensions: 100 x 12 m

Capacity: 16 000 pcs

Realization date: 2016



RABBIT Trhový Štěpánov a. s., hall for broilers

Place of realization: Jenišovice

Dimensions: 20 x 99m | 20 x 94 m | 20 x 90 m

Capacity: 100 000 pcs

Realization date: 2017



AG MAIWALD a.s., hall for hens

Place of realization: Libotenice

Dimensions: 23 x 107 m

Capacity: 97 000 pcs

Realization date: 2017





SUMPS

AGRO PODLEŠÍ, a.s., Červené Janovice, construction of sump

Place of realization:	Bahno
Height:	6 m
Diameter:	15 m
Realization date:	2010



Neveklov a.s., sump

Place of realization:	Starný u Neveklova
Height:	6 m
Diameter:	25 m
Realization date:	2011



Statek Novák Jarpice - Kamenice s.r.o., sump

Place of realization:	Vyšínek
Height:	6 m
Diameter:	26 m
Realization date:	2011



Ing. Štěpán Brodský, Václavice, storage sump for slurry

Place of realization:	Václavice
Height:	10 m
Diameter:	27 m
Realization date:	2011



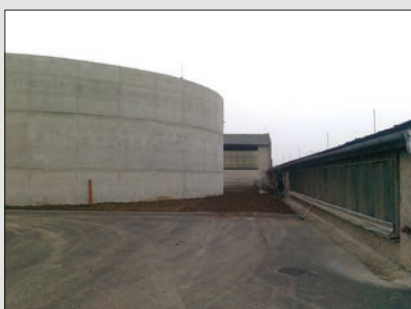
DVP, družstvo, Pyšel, sump for slurry

Place of realization:	Pyšel
Height:	9 m
Diameter:	14 m
Realization date:	2012



ZEM, a.s., Lužec nad Cydlinou, sump for slurry

Place of realization:	Nepolisy
Height:	9 m
Diameter:	30 m
Realization date:	2013



Výzkumný ústav živočišné výroby, v.v.i., Uhřetěves, construction of sump

Place of realization:	Uhřetěves
Height:	9 m
Diameter:	25 m
Realization date:	2013



Srb Václav, storage and pumped-storage sump

Place of realization:	Žerotín
Height:	6 m
Diameter:	20 m
Realization date:	2014



PIVKOVICE a.s., construction of storage sumps

Place of realization: Pivkovic - Netonice

Height: 8,5 m

Diameter: 27 m

Realization date: 2014



Krakonošův ranč - hospodářské družstvo, main storage sumps

Place of realization: Poniklá

Height: 6 m

Diameter: 15 m

Realization date: 2014



REC. Ing. spol. s.r.o., extension of WWTP

Place of realization: Dolní Dobrouč

Height: 6,5 m

Diameter: 12 m | 21 m

Realization date: 2014 / 2015



Zemědělské družstvo Okrouhlička, concrete sump

Place of realization: Okrouhlička

Height: 3 m

Diameter: 23 m x 6,5 m

Realization date: 2015



Horáček Miroslav, sump

Place of realization:	Šnakov
Height:	7,5 m
Diameter:	25 m
Realization date:	2015



ZEOS VESCE, s.r.o., circular sump

Place of realization:	Vesce
Height:	4,5 m 9,5 m
Diameter:	8 m 30,5 m
Realization date:	2015



Zemědělsko - obchodní družstvo Žichlínek, slurry sump

Place of realization:	Damníkov
Height:	9 m
Diameter:	25 m
Realization date:	2015



NIROS, spol. s r. o., storage tank

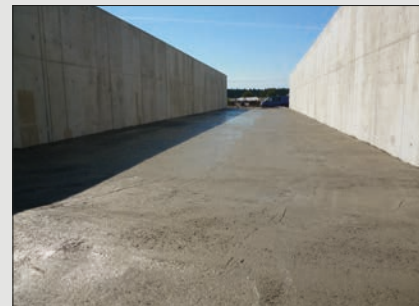
Place of realization:	Nížkov
Height:	7 m
Diameter:	18 m
Realization date:	2016 / 2017



|| SILAGE TROUGHS

Zemědělské družstvo vlastníků Hodiškov, bicameral silage trough

Place of realization:	Hodiškov
Height:	4 m
Dimensions:	2 x 95 x 50 m
Realization date:	2012



Zemědělské obchodní družstvo Lubná, haylage trough

Place of realization:	Lubná
Height:	4,5 m
Dimensions:	16 x 39 m
Realization date:	2012



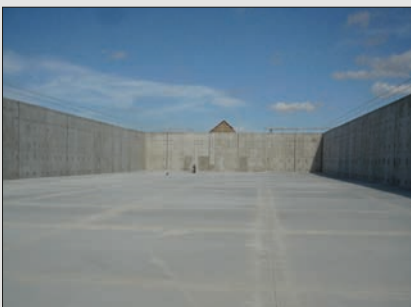
Neumann Aleš, Okřešice, silage trough

Place of realization:	Okřešice
Height:	4 m
Dimensions:	2 x 12 x 60 m
Realization date:	2012



Rolnická a.s. Hroznová Lhota, silage trough

Place of realization:	Kozojídky
Height:	6 m
Dimensions:	70 x 57,5 m
Realization date:	2012



Zemědělské družstvo „Růžový palouček“, roofed silage trough

Place of realization: Újezdec

Height: 4,6 m

Dimensions: 66 x 47 m

Realization date: 2013



Poľnohospodárske družstvo GADER Blatnica, roofed silage trough

Place of realization: Blatnica

Height: 4 m

Dimensions: 50 x 16 m

Realization date: 2013



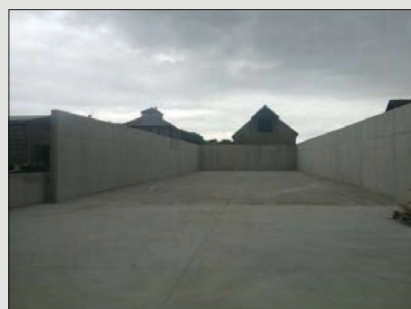
AGRO VYSOČINA BYSTRÉ akciová spoločnosť, haylage trough

Place of realization: Trpín

Height: 3,8 m

Dimensions: 50 x 14,5 m

Realization date: 2014



Zemědělské družstvo vlastníků Novoveselsko, roofed silage trough

Place of realization: Nové Veselí

Dimensions: 40 x 18 m

Realization date: 2014



AGRAS Bohdalov, a.s., reconstruction and expansion of silage trough

Place of realization:	Bohdalov
Height:	5,5 m
Dimensions:	13 x 81 m
Realization date:	2015



Zemědělská a.s. Krucemburk, akciová společnost, reconstruction of silage troughs

Place of realization:	Vojnův Městec
Height:	5,25 m
Dimensions:	2 x 65 x 15 m
Realization date:	2015



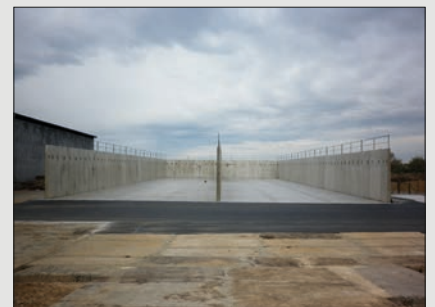
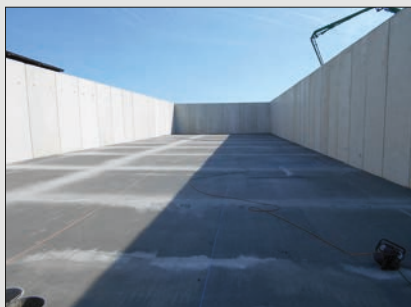
Agrospol Mladá Vožice a.s., reconstruction of silage troughs

Place of realization:	Běleč, Hlasivo
Height:	4 m 4,5 m
Dimensions:	50 x 20,5 m wall 40 m
Realization date:	2015



AGRIMA DRAŽENOV a.s., silage trough

Place of realization:	Draženov
Height:	4,5 m
Dimensions:	60 x 29 m
Realization date:	2015



F A D O M s.r.o., reconstruction of silage troughs

Place of realization: Dolní Město

Height: 4,5 m

Dimensions: 2 x 61 x 41 m

Realization date: 2016



Zemědělská a.s. Krucemburk, silage trough

Place of realization: Krucemburk

Height: 5 m

Dimensions: 6 x 12 x 50 m | 12 x 38 m

Realization date: 2016



ZD Klučov - Lhota, družstvo, investment in the agricultural holdings

Place of realization: Klučov

Height: 3,7 m

Dimensions: 80 x 10 m

Realization date: 2016



F A D O M s. r. o., silage trough

Place of realization: Dolní Město

Height: 4,5 m

Dimensions: 37 x 76 m

Realization date: 2017 / 2018





Zemědělské družstvo Čížová, construction of sump and dunghill

Place of realization: Zlivice

Dimensions: 27 x 20 m

Realization date: 2009



TOPAGRA, spol. s.r.o., Topolná, dunghill

Place of realization: Topolná

Dimensions: 60 x 41 m

Realization date: 2011



AGRONEA a.s. Polička, reconstruction of dunghill

Place of realization: Pomezí

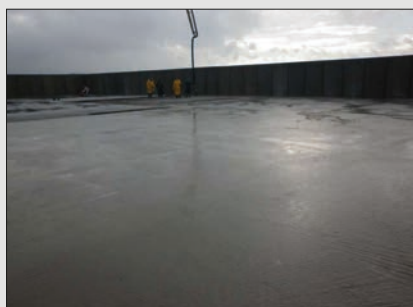
Realization date: 2012



ZDOBNICE a.s., Slatina nad Zdobnicí, field dunghill

Place of realization: Slatina nad Zdobnicí

Realization date: 2013



Zemědělské družstvo Hraničář Loděnice, reconstruction of circular dunghill

Place of realization: Vávrovice

Dimensions: 40 m

Realization date: 2014



ZEMOS a.s., dunghill

Place of realization: Starovice

Dimensions: 100 x 45 m

Realization date: 2014



Brož Miroslav, construction of dunghill

Place of realization: Částkovice

Dimensions: 40, 5 x 12 m

Realization date: 2014 / 2015



AGP - nova spol. s.r.o., dunghill

Place of realization: Blažkov

Dimensions: 43 x 10 m

Realization date: 2015

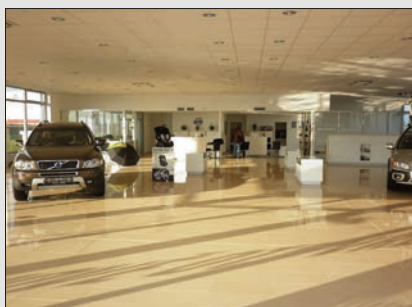




Auto Kurtz s.r.o., construction of the Volvo garage and showroom

Place of realization: Vestec u Prahy

Realization date: 2011



Bilfinger Berger Baugesellschaft m.b.H, Plzeň, storage hall La Lorraine

Place of realization: Kladno

Dimensions: 34 x 35 m

Weight: 284 tun

Realization date: 2012



TOP ALULIT s.r.o., reconstruction and extension of the production facility

Place of realization: Benešov

Dimensions: 79 x 22 m

Realization date: 2013



COLAS CZ, a.s., roofing for stone debris

Place of realization: Bystřice n. Pernštejnem

Dimensions: 20 x 25,5 m

Weight: 22 tun

Realization date: 2014



S.O.K. stavební, s.r.o., production area

Place of realization: Třebíč

Dimensions: 142 x 50 m | 30 x 17 m

Weight: 392 tun

Realization date: 2015



SKLÁŘSKÉ STROJE ZNOJMO, s.r.o., newly built production hall

Place of realization: Znojmo

Dimensions: 48 x 16 m

Weight: 61 tun

Realization date: 2015

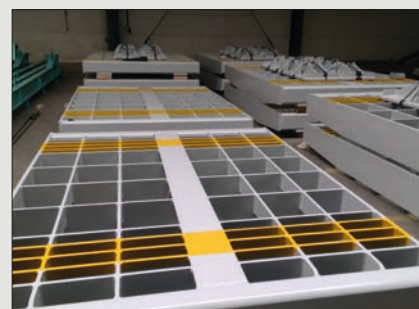
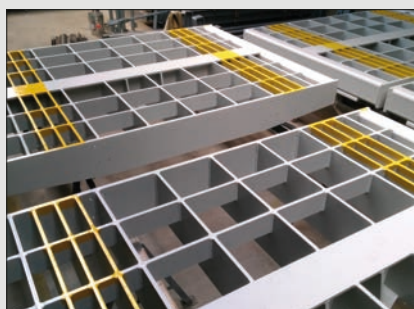


KOOL Trading, spol. s.r.o., steel structure

Place of realization: Třebíč

Weight: 50 tun

Realization date: 2017



DVP, družstvo, roofing of the silage trough

Place of realization: Pyšel

Weight: 37,14 tun

Realization date: 2017



AGRICO, s.r.o., pigs feedlot

Place of realization: Staré Město

Used elements: slurry channel wall

Realization date: 2010

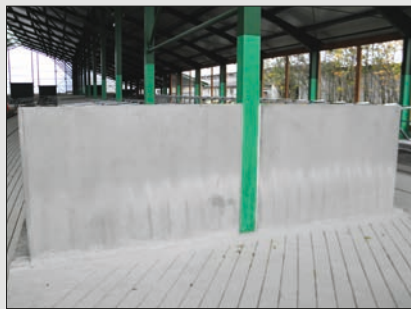


AGRONEA a.s. Polička, farm for cows

Place of realization: Pomezí

Used elements: side wall
section barrier straight

Realization date: 2014



Zemědělské družstvo Dobruška, modernization of stables

Place of realization: Dobruška

Used elements: side wall
section barrier straight
bedding edge

Realization date: 2015

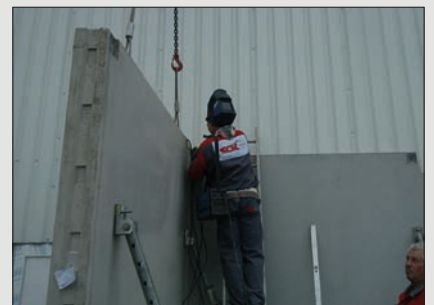


Zemědělské družstvo Kožichovice, dust chamber

Place of realization: Kožichovice

Used elements: dust storage

Realization date: 2015



AGROSPOL Výprachtice s.r.o., modernizace farmy

Místo realizace: Výprachtice

Použité prvky: side wall
partition, bedding edge,
section barrier rounded,
feed trough,
feed trough step

Realizace: 2016



BONAGRO, a.s., modernizace mléčné farmy

Místo realizace: Šlapanice

Použité prvky: side wall
partition, bedding edge
section barrier straight
feed trough

Realizace: 2016



PVOD Kočín, cowshed

Místo realizace: Kočín

Použité prvky: side wall,
box bed,
section barrier rounded,

Realizace: 2017



RABBIT Trhový Štěpánov a.s., hall for broilers

Místo realizace: Jenišovice

Použité prvky: side wall

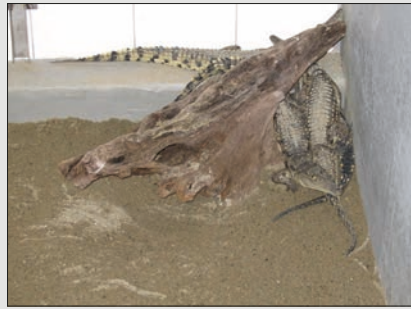
Realizace: 2017





AGRODRUŽSTVO JEVIŠOVICE, reconstruction of the hall for crocodiles

Place of realization:	Velký Karlov
Dimensions:	10 x 20 m
Realization date:	2006



AVICENTRA s.r.o., outbuilding of storage hall and paved areas

Place of realization:	Stropešín
Dimensions:	25 x 14,5 m
Realization date:	2006 / 2007



Poľnohospodársko - obchodné družstvo Abrahám, grain warehouse

Place of realization:	Abrahám
Dimensions:	70 x 20 m
Realization date:	2009



TAURUS, družstvo, Protivanov, storage of plant products

Place of realization:	Protivanov
Dimensions:	91 x 30 m
Realization date:	2011

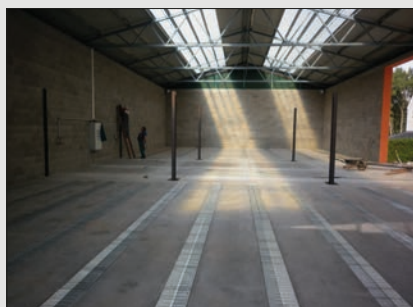


Brodská Martina, storage of nuts

Place of realization: Václavice

Dimensions: 35 x 15 m

Realization date: 2012



Zemědělské družstvo Kožichovice, družstvo, post-harvest lines

Place of realization: Kožichovice

Dimensions: 17 x 12 m

Realization date: 2015



BONAGRO, a.s., alterations and extension of mechanization center

Place of realization: Šlapanice

Dimensions: 129 x 15,5 m

Realization date: 2015



Zemědělské družstvo „Roštýn“, technology storage shelter

Place of realization: Hodice

Dimensions: 12 x 30 m

Realization date: 2016





ZEVO, spol. s.r.o., Boskovštejn, biogas plant

Place of realization: Velký Karlov

Diameter: 15 - 27 m

Realization date: 2005 / 2006



TEDOM a.s., Výčapy, biogas plant

Place of realization: Suchohrdly u Miroslavi

Realization date: 2007

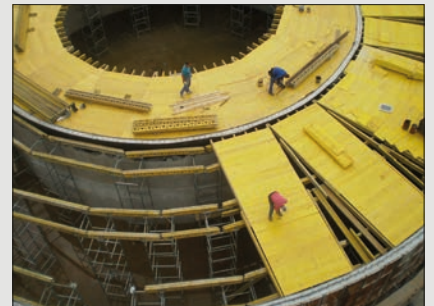


R.I.K. s.r.o., Turčianske Teplice, biogas plant

Place of realization: Turčianske Teplice

Diameter: 21 - 36 m

Realization date: 2009 / 2010 / 2011



AGROPEX s.r.o., Sklabiná, biogas plant

Place of realization: Sklabiná

Diameter: 25 m

Realization date: 2011 / 2012

